

1 Teaching

Quality first teaching that is tailored to meet the needs of the individuals in the class; that encourages children to be reflective, self-regulated and curious learners; and, is built on mutually respectful relationships

TAs in each class provide high quality, measurable intervention

Smaller class sizes where possible

Commitment to TA development and regular training through involvement in DELTA project

Enhance resilience and independent learning through developing metacognitive strategies

Continue to build on expectations of vocabulary development in all curriculum areas

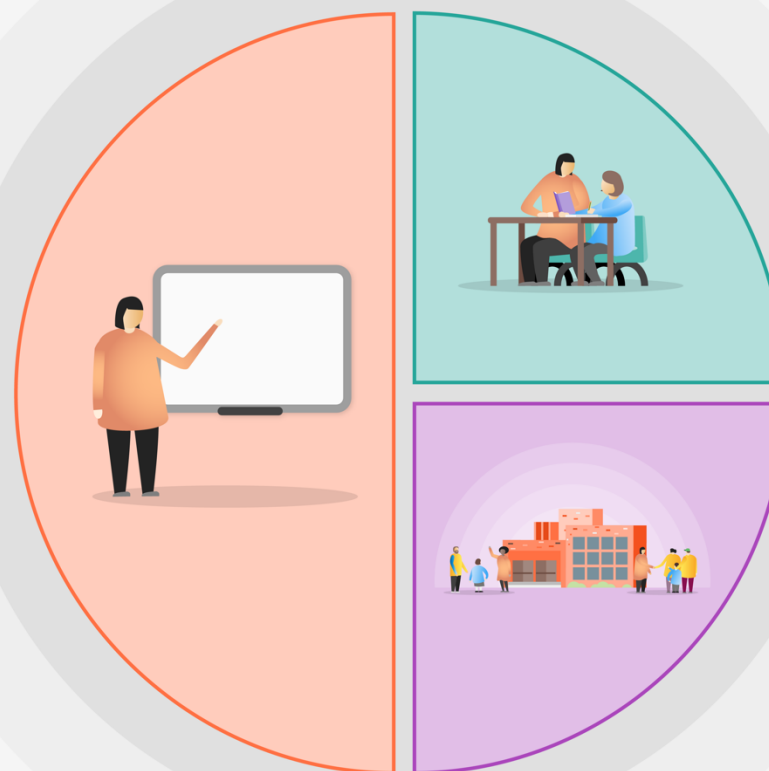
Ensure consistency in phonic approach throughout KS1, using phonics-led guiding reading model and Big Cat phonics reading books

Build subject leader capacity and impact – focusing on developing the provision for lower attaining PP children

Continuation of The Write Stuff teaching strategies – developing staff confidence to deliver writing skills dynamically while reducing cognitive load for learners

Thrive approach sustained and applied across each class

Pupil Premium lead to monitor attainment of disadvantaged children across core subjects to inform staff training, pupil premium class profiles and targeted intervention



2 Targeted academic support

Translation services to support EAL family access

Literary interventions to boost vocabulary and reading attainment in KS2 (Bedrock Vocabulary and Reading Gladiators)

1:1 metacognition coaching for PP children with teacher

Promote PP use of Times table Rockstar through weekly certificates and recognition

Improve teacher/TA application of Birmingham Toolkit to assess SEND

EYFS learning packs to support parental engagement

Music therapy

3 Wider strategies

Parent relationships built from early years through coffee mornings and toddler groups – Family Link worker

Breakfast Club and Magic Breakfast to support attendance and readiness to learn

Graduated, targeted and timely attendance support

Full time pastoral mentor to provide mental health support for children struggling to engage

Use of representative texts and role models across curriculum

Reduced trip costs, access to one free club and uniform vouchers to enrich engagement

PP children are targeted to ensure that they have booked lunches for the term